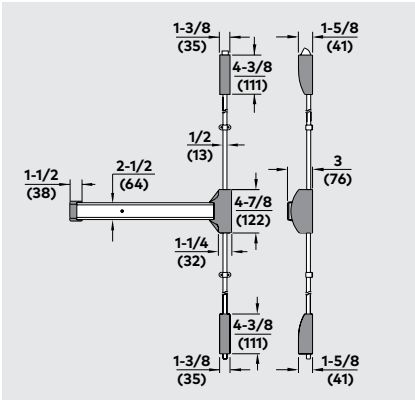


8400 exit device functions

Model	Function	Operation	Trim	
8400 F8400	01	Exit only (no trim)		
8400 F8400	DT	Dummy trim	8ODT	NPSDT 8HDT
8400	02	Entrance by trim when actuating bar is locked down.	8P02 8ODTP	8PDT PRS02 PRT02 8x02R
8400 F8400	03	Entrance by trim when latch bolt is retracted by key. Key removable only when locked.	8P02 8O03P	8O03 8P03 NPS03 PRS03 PTS03 8Hx03 8Hx03J 8K03 8K03J 8x03 8x03J
8400 F8400	05	Entrance by thumbpiece. Key locks or unlocks thumbpiece.		HRS05 HTS05
8400 F8400	06	Entrance by thumbpiece only when released by key. Key removable only when locked.		HRS06 HTS06
8400 F8400	08	Entrance by lever or knob. Key locks or unlocks lever or knob.		8Hx08 8Hx08J 8K08 8K08J 8x08 8x08J
8400 F8400	09	Entrance by lever or knob when unlocked by key. Key removable only when locked.		8Hx09 8Hx09J
8400	22	Entrance by thumbpiece (no cylinder). Trim always active.		HRS22 HTS22
8400 F8400	23	Entrance by lever or knob (no cylinder). Lever or knob always active.		8Hx23 8K23 8x23

Note: Where x appears above, x = lever style. See page 13 for details.

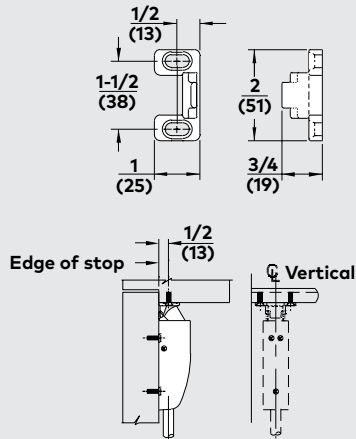


8400 strikes & minimum stile

8400 strikes

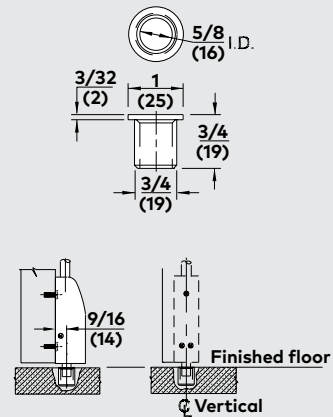
No. - (standard)

Top strike 8400, F8400, 8400 LB and F8400 LB



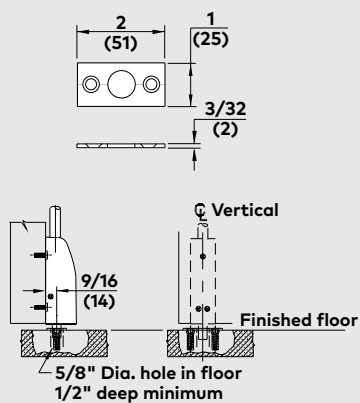
No. - (standard)

Bottom strike 8400 and F8400



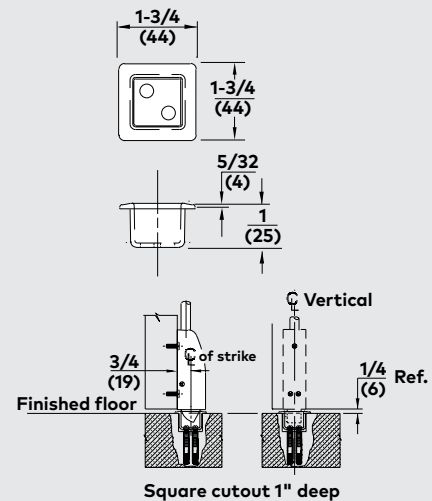
No. F (optional)

For bottom slide bolt.



No. P (optional)

Used with optional pullman type latch bolt.



8400 strikes & minimum stile

No. R (optional)
Used with optional pullman type latch bolt.

1-1/8 (29)

1-13/16 (46)

2-3/8 (60)

5/8 (16)

1/2 (13)

5/8 (16)

Vertical

Finished floor

No. -A (optional)
For flush door and frame conditions.

1-1/2 (38)

2 (51)

2-1/4 (57)

Vertical

Minimum stile & vertical reference

Vertical Rod x Vertical Rod

Minimum stile

Edge of door

1-7/8 (48)

Vertical reference

Trim	*Minimum stile
No trim, 8P02	3-3/16 (97)
8PDT, 8P03	3-3/16 (97)
8ODT, 8O03, 8O03P	4-5/16 (110)
8x, 8Hx	4-1/4 (108)

Vertical Rod x Rim

Minimum stile

Edge of door

1-5/8 (41)

Vertical reference

Not fire rated

Trim	*Minimum stile
No trim, 8P02	4-1/16 (103)
8PDT, 8P03	4-1/16 (103)
8ODT, 8O03, 8O03P	4-1/16 (103)
8x, 8Hx	4 (102)

*Minimum stile dimensions accommodate standard device touchbar widths shown.
For smaller stiles, consult factory for optional touchbar lengths.
Note: Where x appears above, x = lever style. See page 13 for details.